



STANFORD RADIOLOGY

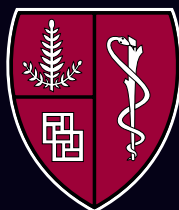
*Presents the 1st Annual
International Symposium on
Multidetector-Row CT*

*June 27-28, 1999
St. Francis Hotel
San Francisco,
California*



*Sign up
and receive a FREE
SUBSCRIPTION to our new
Online CME!*

*Can't Make It? Look inside
for a new way to
participate. ▶*



*Supported by General Electric Medical Systems,
Siemens Medical Systems and Toshiba America Medical Systems, Inc.*

Program

Sunday, June 27, 1999

- 7:30-8:00 am Coffee and Pastries, Final Registration
8:00-8:15 Welcome & Introduction
Gary M. Glazer, M.D.

Technical Overview

MODERATOR: GEOFFREY D. RUBIN, M.D.

- 8:15-8:45 Technical Evaluation of MDCT:
The Stanford Experience
Sandy Napel, Ph.D.
8:45-9:15 Technical Evaluation of MDCT:
The Erlangen Experience
Willi A. Kalender, Ph.D.
9:15-9:45 Alternative Visualization and
Analysis of MDCT Data
Geoffrey D. Rubin, M.D.
9:45-10:00 Panel Discussion on Techniques
and 3-D
Drs. Napel, Kalender, Rubin & Kopp
10:00-10:30 Coffee Break

Thoracic Applications MDCT

MODERATOR: GEOFFREY D. RUBIN, M.D.

- 10:30-11:00 Pulmonary Multidetector-Row CT:
The Stanford Experience
Ann Leung, M.D.
11:00-11:30 Pulmonary Multidetector-Row CT:
The Munich Experience
Uwe Joseph Schoepf, M.D.
11:30-12:00 pm Panel Discussion on Thoracic MDCT
Drs. Leung, Schoepf, Rubin
12:00-1:15 Welcome Course Lunch for
Registrants and Faculty

Cardiovascular Applications of MDCT

MODERATOR: GEOFFREY D. RUBIN, M.D.

- 1:15-2:00 CT Angiography of the Aorta and
Lower Extremity Run-Off
Geoffrey D. Rubin, M.D.
2:00-2:30 Renal and Visceral CT Angiography
Joel F. Platt, M.D.
2:30-3:00 Pulmonary CT Angiography
Ann Leung, M.D.
3:00-3:15 Break
3:15-3:30 New Approaches for Cardiac CT
Willi A. Kalender, Ph.D.
3:30-4:00 Multislice Cardiac CT: Basic
Principles and Initial Clinical Results
Andreas Kopp, M.D.
4:00-4:30 Cardiac Applications for
Multidetector-Row CT
Christoph D. Becker, M.D.
4:30-5:00 Panel Discussion on
Cardiovascular CT
Drs. Rubin, Platt, Leung,
Kalender, Becker

Monday, June 28, 1999

Neuro Applications of MDCT

MODERATOR: BARTON LANE, M.D.

- 8:00-8:30 am Coffee and Pastries
8:30-9:00 Advantages of Multidetector-Row CT
for Imaging the CNS:
The JFK Experience
Lawrence N. Tanenbaum, M.D.
9:00-9:30 Advantages of Multidetector-Row CT
for Imaging the CNS:
The Munich Experience
Roland D. Bruening, M.D.
9:30-10:00 Panel Discussion on Neuro
Applications of MDCT
Drs. Tanenbaum, Bruening
10:00-10:30 Break

Abdominal Applications of MDCT

MODERATOR: R. BROOKE JEFFREY, JR., M.D.

- 10:30-11:00 Overview of Abdominal Applications
with Emphasis on the Acute
Abdomen
R. Brooke Jeffrey, Jr., M.D.
11:00-11:30 Trauma
Ella A. Kazerooni, M.D.
11:30-12:00 pm Strategies for Optimal Imaging
of the Liver
W. Dennis Foley, M.D.
12:00-12:30 Detection and Characterization of
Hepatic Neoplasia
Erik K. Paulson, M.D.
12:30-1:45 Lunch on Own
1:45-2:15 Detection and Characterization of
Renal Lesions
Sanjay Saini, M.D.
2:15-2:45 Pancreatic Carcinoma
Werner A. Bautz, M.D.
2:45-3:15 CT Pancreatography and
Cholangiography
Vassilios D. Raptopoulis, M.D.
3:15-3:30 Break
3:30-4:00 Surgical Planning:
Advantages of MDCT
Mark E. Baker, M.D.
4:00-4:30 Virtual Colonoscopy with MDCT
Christopher Beaulieu, M.D., Ph.D.
4:30-5:00 Panel Discussion on Abdominal
Applications
Drs. Jeffrey, Kazerooni, Foley,
Paulson, Saini, Bautz, Raptopoulis,
Baker & Beaulieu

All lectures will be held in the meeting rooms of the St. Francis Hotel. Registration and check-in will begin at 7:30 a.m. on Sunday, June 27, 1999.

Course Objectives

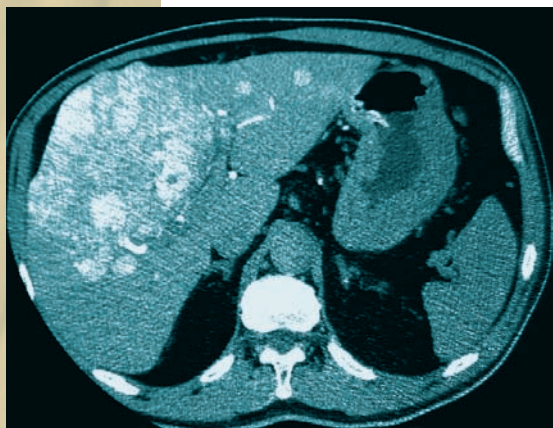
This course is intended for Radiologists and medical imaging scientists. It will review the principles, techniques, and clinical applications of Multidetector-Row CT. Topics Include:

- ▶ Basic Principles of Multidetector CT
- ▶ Technical Evaluation of MDCT
- ▶ Cardiovascular Applications for Multidetector-Row CT
- ▶ Multidetector-Row CT of the chest, abdomen, and pelvis
- ▶ Advantages of Multidetector-Row CT for Imaging the CNS

Accreditation

Stanford University School of Medicine is accredited by the Accreditation Council for Continuing Medical Education to sponsor continuing medical education for physicians.

Stanford University School of Medicine designates this continuing medical education activity for up to 14 credit hours in Category 1 of the Physician's Recognition Award of the American Medical Association provided it is completed as designed.



designates this continuing medical education activity for up to 14 credit hours in Category 1 of the Physician's Recognition Award of the American Medical Association provided it is completed as designed.

Course Director

Gary M. Glazer, M.D.
Professor and Chairman,
Stanford University
School of Medicine

Program Directors

Geoffrey D. Rubin, M.D.
Assistant Professor of Radiology,
Stanford University
School of Medicine

R. Brooke Jeffrey, Jr., M.D.
Professor of Radiology,
Chief of Abdominal Imaging,
Stanford University
School of Medicine

Stanford Faculty

Christopher Beaulieu, M.D., Ph.D.
Assistant Professor of Radiology

Ann Leung, M.D.
Assistant Professor of Radiology,
Chief of Thoracic Imaging

Sandy Napel, Ph.D.
Associate Professor of Radiology

Guest Faculty

Mark E. Baker M.D.
Head, Section of
Abdominal Imaging,
Cleveland Clinic Foundation

Werner A. Bautz, M.D.
University of Erlangen-Nuernberg

Christoph D. Becker, M.D.
Klinikum Grosshadern,
University of Munich

Roland D. Bruening, M.D.
Klinikum Grosshadern,
University of Munich

W. Dennis Foley, M.D.
Professor of Radiology,
Medical College of Wisconsin

Willi A. Kalender, Ph.D.
University of Erlangen-Nuernberg

Ella A. Kazerooni, M.D.
Associate Professor of Radiology,
University of Michigan
Medical Center

Andreas Kopp, M.D.
Eberhard-Karls University,
Tuebingen

Erik K. Paulson, M.D.
Associate Professor of Radiology,
Duke University Medical Center

Joel F. Platt, M.D.
Associate Professor of Radiology,
University of Michigan
Medical Center

Vassilios D. Raptopoulis, M.D.
Associate Professor of Radiology,
Chief of Abdominal Imaging,
Beth Israel Deaconess Medical
Center

Sanjay Saini, M.D.
Associate Professor of Radiology,
Harvard Medical School
Director of
Computed Tomography,
Massachusetts General Hospital

Uwe Joseph Schoepf, M.D.
Klinikum Grosshadern,
University of Munich

Lawrence N. Tanenbaum M.D.
Chief of Neuroradiology,
JFK Medical Center