

6th Annual International Symposium on

Multidetector-Row CT

Course Director: Gary M. Glazer, M.D.

Program Director: Geoffrey D. Rubin, M.D.

STANFORD RADIOLOGY

June 23-26, 2004

Ritz-Carlton, San Francisco



The most comprehensive and valuable course on MDCT

- 55 world-renowned speakers***
- Practical & current clinical sessions***
- Workstation Face-off***
- Hands-on Workstation Training***



STANFORD
SCHOOL OF MEDICINE

Stanford University Medical Center

Accommodations

Located in a 1909 Nob Hill landmark, The Ritz-Carlton, San Francisco is the City's only hotel to capture both Mobil Travel Guide's Five Stars and the American Automobile Association's Five Diamonds for 2003 – the hospitality industry's most distinguished awards. The Dining Room at The Ritz-Carlton, San Francisco is also the City's only Five Diamond restaurant. The Ritz-Carlton, San Francisco, at 600 Stockton Street at California, is minutes away from Union Square shopping, Fisherman's Wharf and the Financial District, and is located across the street from the California Street Cable Car line. The hotel also features a state of the art Fitness Center with indoor pool, steam and sauna. Each guest room has Egyptian cotton sheets, down comforters and feather beds.



Special rates of \$265.00 per room per night for a Deluxe Room have been reserved for our conference participants. Rates are for single or double occupancy, and are subject to tax. To receive this special rate please make your reservation no later than **May 21, 2004**. After May 24th, rooms at our discount rates cannot be guaranteed. Rooms at this special rate will be reserved for attendees on a "first-come, first-served" basis, and may sell out before the cut-off date.

Don't be disappointed by waiting too long – reserve your room now by calling The Ritz-Carlton, San Francisco Room Reservations Department at (415) 296-7465, or 1-800-241-3333. Please identify yourself as a participant of the conference. For more information on The Ritz-Carlton, San Francisco, visit their website: http://www.ritzcarlton.com/hotels/san_francisco/.

Travel and Transportation

Special Airfares and discount car rentals: Palo Alto Village Travel has been chosen as the official travel agency for this conference. Palo Alto Village Travel's knowledgeable staff are at your service Monday-Friday, 8:30am-5:30pm, PST. Call Palo Alto Village Travel at (800)-245-3160 or (650) 326-0510.

Special meeting discounts on airfare and car rentals have been arranged for our attendees and their guests. The airlines offer discounts off published fares and special area pricing rates.

Call American Airlines at (800) 433-1790, and reference Tour Code Number 3164AC

Call Delta Airlines at (800) 241-6760, and reference File Number 199751A.

Call United Airlines at (800) 521-4041 and reference Meeting ID Code 502BH.

Call Hertz Car Rental at (800) 654-2240, and refer to CV # 01YN0010.



Course Enrollment

Enrollment and instant email confirmation is available 24 hours a day at <http://radiologycme.stanford.edu>.

You can also call us toll free at (888) 556-2230, direct at (650) 473-5052, or email us at radiologycme@med.stanford.edu.

You may also complete and return the course enrollment form by mail or fax.

Refunds – Full refunds, less a \$75.00 administrative fee, will be made to those providing written notification of withdrawal by May 24, 2004. After that date, no refunds will be given.

Recreation, Activities and Attractions

Enjoy the area's many attractions, and exhibits from a tour of Alcatraz Island to an afternoon in the Academy of Sciences. Visit the Exploratorium, or the new "walk-through" aquarium at Pier 39. Bike across the Bridge, or up to Mt. Tam in Marin, rollerblade in Golden Gate Park, Windsurf or sail in the Bay. Enjoy a memorable walk in Muir Woods where the redwoods have stood for centuries. Take a ferry across the Bay to Angel Island to picnic and hike. Golfers will want to take advantage of golfing at the Presidio Golf Course. In a city known for its ethnic and cultural diversity, San Francisco's 65 museums are no exception. From masterpieces to multimedia, The City's museums are among the finest in the world. The De Young, the Asian Art Museum and the California Palace of the Legion of Honor are among the most well known.

In the evening you may choose to enjoy a Tony-award winning show or a South of Market dance club. With over 90 theaters in the Bay Area, shows and cabarets run nightly, including the incomparable "Beach Blanket Babylon".

For more information on visiting San Francisco, please call the San Francisco Visitors Bureau at 415-227-2678 or visit their web site at <http://www.sfvisitor.org/visitorinfo/index.html>.



Course Objectives

This course is intended for Radiologists, Medical Imaging Scientists, Radiology Technologists and Non-Radiologist Physicians interested in CT technology and applications. Topics include:

- ▶ Basic Principles of Multidetector CT
- ▶ Imaging Quality and Radiation Dose
- ▶ 3D Techniques
- ▶ Cardiac Applications
- ▶ Pediatrics Applications
- ▶ Abdominal Applications
- ▶ Thoracic Applications
- ▶ Musculoskeletal Applications
- ▶ Neuroradiology Applications
- ▶ Screening Applications

Course Director

Gary M. Glazer, MD
Emma Pfeiffer Merner Professor in the Medical Sciences, Professor and Chairman, Department of Radiology, Stanford University School of Medicine

Program Director

Geoffrey D. Rubin, MD
Associate Professor
Chief of Cardiovascular Imaging
Co-Director 3D Laboratory
Stanford University School of Medicine

Guest Faculty

Christoph R. Becker, MD
Associate Professor, Section Chief Computed Tomography, Department of Clinical Radiology, University of Munich

Phillip M. Boiselle, MD
Director, Thoracic Imaging and Associate Director of Radiology Residency Program, Beth Israel Deaconess Medical Center, Assistant Professor, Harvard Medical School

Jerry Breen, MD
Consultant in Cardiovascular Radiology, Mayo Clinic, Rochester MN

Jay Cinnamon, MD
Quantum Radiology Northwest, Marietta, Georgia

Fergus V. Coakley, MD
Associate Professor and Chief, Abdominal Imaging, University of California School of Medicine at San Francisco

Adrian K. Dixon, MD
Professor of Radiology, Addenbrooke's NHS Trust and the University of Cambridge, England

Bart L. Dolmatch, MD
Professor of Radiology, Director of Vascular and Interventional Radiology, UT-Southwestern Medical Center, Dallas, Texas

Theodore J. Dubinsky, MD
Associate Professor of Radiology, Obstetrics and Gynecology, University of Washington, Director of Body Imaging, Harborview Medical Center

George M. Ebert, MD, PhD
Chief of Computed Tomography, Director of PET Imaging, Associate Professor, Department of Radiology, University of Vermont, College of Medicine

George Y. El-Khoury, MD
Professor of Radiology and Orthopaedics, Director of Musculoskeletal Radiology, University of Iowa Hospitals and Clinics

Elliot K. Fishman, MD, FACR
Professor of Radiology and Oncology, Director, Diagnostic Radiology and Body CT, Johns Hopkins Hospital

W. Dennis Foley, MD
Professor of Radiology, Chief, Section of Digital Imaging, Medical College of Wisconsin

Donald P. Frush, MD
Associate Professor, Chief, Pediatric Radiology, Duke University Medical Center

R. C. Gilkeson, MD
Chief of Cardiothoracic Imaging, University Hospitals of Cleveland, CWRU School of Medicine

S. Bruce Greenberg, MD
Associate Professor, University of Arkansas for Medical Sciences and Arkansas Children's Hospital

James F. Gruden MD
Associate Professor of Radiology and Internal Medicine, Emory University School of Medicine, Adjunct Professor of Biomedical Engineering, Georgia Institute of Technology, Director, Cardiothoracic Imaging, Director, Biomedical Imaging Lab, Emory University Hospital and Clinic

Willi Kalender, MD, PhD
Institut fuer Medizinische Physik, University of Erlangen-Nuernberg

Kazuhiro Katada, MD
Professor and Chairman, Dept of Radiology, Fujita-Health University, School of Medicine

Axel Kuettner, MD
Department of Diagnostic Radiology, Eberhard-Karls-University Tuebingen

Joan M. Lacomis, MD
Clinical Associate Professor of Radiology, University of Pittsburgh Medical Center

João A. C. Lima, MD, MBA
Associate Professor of Medicine and Radiology, Johns Hopkins University

Michael Macari, MD
Associate Professor of Radiology, New York University

Cynthia McCollough, PhD
Associate Professor of Radiological Physics, Department of Radiology, Mayo Clinic, Rochester, MN

Kieran J. Murphy, MD, FRCPC
Associate Professor of Radiology and Neurosurgery, Director of Interventional, Neuroradiology, Therapeutic Radiology, Johns Hopkins Medical Institution

Rendon C. Nelson, MD
Professor and Vice-Chairman, Department of Radiology, Duke University Medical Center

Koen Nieman, MD
Research Fellow, Departments of Radiology and Cardiology, Erasmus Medical Center, The Netherlands

Konstantin Nikolaou, MD
Fellow of Radiology, Cardiovascular MRI and CT, University of Munich

Robert A. Novalline, MD
Professor of Radiology, Harvard Medical School, Director of Emergency Radiology, Massachusetts General Hospital

Nathan Peled, MD
Head, Department of Radiology, Carmel Medical Center, Haifa, Israel

Mathias Prokop, MD
Associate Professor of Radiology, University Medical Center Utrecht, The Netherlands

Patrik Rogalla, MD
Head, CT Division, Department of Radiology, Charité Hospital, Universitaetsmedizin Berlin, Germany

Sanjay Saini, MD, MBA
Professor of Radiology, Harvard Medical School, Director, CT Services, Massachusetts General Hospital

U. Joseph Schoepf, MD
Department of Radiology, Brigham and Women's Hospital, Harvard Medical School

Aart J. van der Molen, MD
Section of Body CT, Leiden University Medical Center, Leiden, The Netherlands

Richard Webb, MD
Professor of Radiology, Chief of Thoracic Imaging, University of California School of Medicine at San Francisco

David Yankelevitz, MD
Professor of Radiology, The New York Presbyterian Hospital, New York, New York

Stanford Faculty

Patrick D. Barnes, MD
Chief of Pediatric Neuroradiology, Lucile Salter Packard Children's Hospital, Associate Professor of Radiology

Christopher F. Beaulieu, MD, PhD
Associate Professor of Radiology, Chief of Musculoskeletal Radiology

Francis Chan, MD
Assistant Professor of Radiology

Lawrence Chow, MD
Assistant Professor of Radiology

Terry S. Desser, MD
Assistant Professor of Radiology

Huy M. Do, MD
Assistant Professor of Radiology and Neurosurgery, Interventional Neuroradiologist

Dominik Fleischmann, MD
Assistant Professor of Radiology

Stephen P. Fortmann, MD
C. F. Rehnberg Professor in Disease Prevention, Director, Stanford Prevention Research Center

Sanjiv Sam Gambhir, MD, PhD
Director, Molecular Imaging Program at Stanford (MIPS), Head, Division of Nuclear Medicine, Professor, Department of Radiology and Bio-X Program

Garry E. Gold, MD
Assistant Professor of Radiology

Jeffrey C. Hellinger, MD
Clinical Instructor of Radiology

Robert J. Herfkens, MD
Professor of Radiology, Director MRI and Destination Digital

Ann N. Leung, MD
Associate Professor, Associate Chair of Clinical Affairs, Section Chief of Thoracic Imaging, Department of Radiology

Robert Mindelzun, MD
Professor of Radiology

Laura Logan, BA, RT (R) (CT)
Manager, 3D Laboratory

Sandy Napel, PhD
Professor of Radiology, Co-Director, 3D Laboratory

Geoffrey D. Rubin, MD
Associate Professor, Chief of Cardiovascular Imaging, Co-Director 3D Laboratory

Eric E. Williamson, MD
Cardiovascular Imaging Fellow

Program Highlights

55 world-renowned speakers

Users of all major manufacturers' scanners

Practical/current clinical sessions covering all subspecialties. Also includes sessions on:

- Emergency
- Workflow/Image Processing
- CT Screening
- PET/CT

Workstation Face-Off

A unique opportunity for you to view and compare how each major workstation can be used for visualization of 3D data sets. Participating Vendors:

- GE Medical Systems
- Philips Medical Systems
- Siemens Medical Solutions
- TeraRecon
- Vital Images

Hands-on Workstation Training

Learn techniques for post-processing in one-on-one sessions. You will have the opportunity to sign up for these before the meeting and at the meeting with the individual vendors.

Interactive Training Sessions

View challenging cases on CD-ROM using your computer before the meeting. Bring your computer to the session to interpret with the expert.

Relevant and extensive exhibits

Manufacturers of all major equipment, workstations, contrast and book vendors

Program

Tuesday, June 22, 2004

By Appointment: Hands on Workstation Training (see website for details)

3:00-5:00 pm Pre-Registration and Check-In

Wednesday, June 23, 2004

By Appointment: Hands on Workstation Training (see website for details)

7:00-7:30 am Registration, Continental Breakfast, View Exhibits

7:30-7:40 Course Welcome
Gary M. Glazer, MD

7:40-7:45 Program Introduction
Geoffrey D. Rubin, MD

Session I: Principles

MODERATOR: GEOFFREY D. RUBIN, MD

7:45-8:10 Four or More: Understanding the Basics of Multidetector-Row CT
Sandy Napel, PhD

8:10-8:30 The Way to a 256-Row CT Scanner
Kazuhiro Katada, MD

8:30-8:50 Detectors with 25 cm z-Extent: When and How
Willi Kalender, PhD

8:50-9:10 Practical Guidelines for Selecting Detector Width, Pitch and Rotation Speed
Geoffrey D. Rubin, MD

9:10-9:30 Clinical Experience with a 40-Row CT Scanner
Nathan Peled, MD

9:30-9:50 Clinical Experience with a 64-Row CT Scanner
W. Dennis Foley, MD

9:50-10:10 Coffee Break, View Exhibits

10:10-10:30 Optimizing Tube Current and Potential: Tales of the Forgotten Parameters
Sanjay Saini, MD, MBA

10:30-10:50 Discussion

10:50-11:10 Dose Management and Dose Reduction in MDCT
Cynthia McCollough, PhD

11:10-11:20 Debate: Radiation Dose from MDCT Scans is an Important Public Health Concern
Pro: Aart J. van der Molen, MD
Con: Mathias Prokop, MD
Rebuttal: Aart J. van der Molen, MD
Rebuttal: Mathias Prokop, MD

11:40-12:00 pm Discussion

12:00-1:00 Lunch Break (on Own)

Session II: Pediatrics

MODERATOR: PATRICK D. BARNES, MD

1:00-1:20 Technical Considerations for Performing Pediatric MDCT
Donald P. Frush, MD

1:20-1:40 Novel Pediatric Applications Made Possible by MDCT
S. Bruce Greenberg, MD

1:40-2:00 MDCT Applications in Pediatric Neuroradiology (Brain, Spine, Head & Neck)
Patrick D. Barnes, MD

2:00-2:20 Discussion

Session III: Neuro

MODERATOR: HUY M. DO, MD

2:20-2:40 Understanding CT Perfusion
Kieran J. Murphy, MD, FRCPC

2:40-3:00 Stroke: MR vs CT for Detection and Triage
Jay Cinnamon, MD

3:00-3:20 Coffee Break, View Exhibits

3:20-3:40 Cerebral Aneurysm Detection and Characterization: Does MDCT make DSA Obsolete?
Huy M. Do, MD

3:40-3:55 Craniofacial MDCT
Jay Cinnamon, MD

3:55-4:15 Discussion

Session IV: Emergency

MODERATOR: GEOFFREY D. RUBIN, MD

4:15-4:35 Acute Chest Pain
Theodore J. Dubinsky, MD

4:35-5:05 Interactive Session 1: Trauma MDCT: Life Threatening Challenges
Robert A. Novalline, MD

5:05-5:20 Discussion

5:30-7:30 Welcome Reception

Thursday, June 24, 2004

By Appointment: Hands on workstation Training (see website for details)

7:00-7:30 am Continental Breakfast, View Exhibits

Session V: Thorax

MODERATOR: ANN N. LEUNG, MD

7:30-7:50 How MDCT has Changed the Way I Perform and Interpret Thoracic CT Scans
James F. Gruden, MD

7:50-8:10 Venous Thromboembolism
U. Joseph Schoepf, MD

8:10-8:30 Airways
Phillip M. Boiselle, MD

8:30-8:50 Lung Nodule Detection with MDCT: Radiologists versus Computer-Assisted Radiologists
Geoffrey D. Rubin, MD

8:50-9:10 Interactive Session 2: Characterizing Infections in the Immunocompromised Host
Ann N. Leung, MD

9:10-9:30 Discussion

9:30-9:50 Coffee Break, View Exhibits

Session VI: CT Screening

MODERATOR: GEOFFREY D. RUBIN, MD

9:50-10:10 CT Screening: Scan or Scam
Fergus V. Coakley, MD

10:10-10:30 Lung Cancer Screening: The Devil in the Details
Richard Webb, MD

10:30-10:50 CT Screening for Lung Cancer: What Have We Learned over the Past 5 Years and What We Should Know in Another 5 Years
David Yankelevitz, MD

10:50-11:10 Discussion

11:10-12:30 pm *Lunch Break (on Own)*

Session VII: Work Flow/Image Processing
MODERATOR: GEOFFREY D. RUBIN, MD

12:30-12:50 Dealing with Voluminous MDCT Data Sets: What Will it Take?
Sandy Napel, PhD

12:50-1:10 More Scans, Not More Scanners
Sanjay Saini, MD, MBA

1:10-1:30 Efficient 3-D Workstation Design: The Radiologist's Perspective
Elliot K. Fishman MD, FACR

1:30-1:50 Efficient 3-D Workstation Design: The Technologist's Perspective
Laura Logan, BA, RT (R)(CT)

1:50-2:10 Discussion

2:10-2:30 *Coffee Break, View Exhibits*

2:30-5:30 2nd Annual Workstation Face-Off—View and Compare How Each Major Workstation Can be Used for Visualization of 3D Data Sets

Friday, June 25, 2004

By Appointment: Hands on Workstation Training (see website for details)

7:00-7:30 am *Continental Breakfast, View Exhibits*

Session VIII: Musculoskeletal
MODERATOR: GARRY E. GOLD, MD

7:30-8:00 Orthopedic MDCT
Garry E. Gold, MD

8:00-8:20 Thoracic and Lumbosacral Spine, MDCT vs MR
George Y. El-Khoury, MD

8:20-8:40 Cervical Spine CT: Are Plain Films Obsolete?
Jay Cinnamon, MD

8:40-9:00 Discussion

Session IX: PET/CT
MODERATOR: ROBERT J. HERFKENS, MD

9:00-9:20 Considerations for Establishing a PET/CT Program
George M. Ebert, MD, PhD

9:20-9:40 Clinical Contribution and Pitfalls of PET/CT
Robert J. Herfkens, MD

9:40-10:10 PET/CT: 3, 5, and 10 Year Predictions
Sanjiv Sam Gambhir, MD, PhD

10:10-10:30 Discussion

10:30-10:50 *Coffee Break, View Exhibits*

Session X: Abdomen
MODERATOR: LAWRENCE CHOW, MD

10:50-11:10 MDCT of the Acute Abdomen: Challenges and Misconceptions
Michael Macari, MD

11:10-11:30 CT Urography: How and Why
Lawrence Chow, MD

11:30-11:45 Discussion

11:45-1:15 pm *Lunch Break (on Own)*

1:15-1:35 The Impact of MDCT in the UK
Adrian K. Dixon, MD

1:35-1:55 Hepatocellular Carcinoma: Technique and Interpretation Challenges
Rendon C. Nelson, MD

1:55-2:15 Hepatic Metastases: Technique and Interpretation Challenges
Patrik Rogalla, MD

2:15-2:45 **Interactive Session 3: The Juandiced Patient**
Robert Mindelzun, MD

2:45-3:00 Discussion

3:00-3:20 *Coffee Break, View Exhibits*

3:20-3:40 Staging Rectal Carcinoma with MDCT
Terry S. Desser, MD

3:40-4:00 Making CT Colonography Routine: Rationale and Practical Considerations
Michael Macari, MD

4:00-4:20 Challenges in the Interpretation of CT Colonography
Christopher F. Beaulieu, MD, PhD

4:20-4:40 Discussion

Saturday, June 26, 2004

By Appointment: Hands on Workstation Training (see website for details)

7:00-7:30 am *Continental Breakfast, View Exhibits*

Session XI: Cardiovascular I
MODERATOR: GEOFFREY D. RUBIN, MD

7:30-7:50 Cardiac CT: Tips and Techniques for Getting the Most from Your MDCT Scanner
Axel Kuettner, MD

7:50-8:10 Measuring Coronary Calcium Techniques and Rationale
Jerry Breen, MD

8:10-8:30 What's New in CAC Scoring with MDCT
Christoph R. Becker, MD

8:30-8:50 Why I Order Coronary Calcium Scans on my Patients and What I do with the Information
Stephen P. Fortmann, MD

8:50-9:10 Discussion

9:10-9:30 *Coffee Break and Exhibits*

9:30-9:50 CTA of Coronary Arteries and Bypass Grafts: Is it Ready for Clinical Practice
Koen Nieman, MD

9:50-10:10 Nonatherosclerotic CAD
Christoph R. Becker, MD

10:10-10:30 MDCT Before Catheter Ablation for Atrial Fibrillation
Joan M. Lacomis, MD

10:30-10:50 MDCT and the Preoperative Evaluation of the Cardiac Surgery Patient
R. C. Gilkeson, MD

10:50-11:10 Clinical Decision Making with CT: A Cardiologist's Perspective
João A. C. Lima, MD, MBA

11:10-11:30 Discussion

11:30-12:50 pm *Lunch Break (on Own)*

Session XII: Cardiovascular II
MODERATOR: DOMINIK FLEISCHMANN, MD

12:50-1:10 The Pediatric Heart
Francis Chan, MD

1:10-1:30 Optimizing Contrast Medium Delivery for CT Angiography
Dominik Fleischmann, MD

1:30-1:50 Carotid CTA
W. Dennis Foley, MD

1:50-2:10 Atherosclerotic Plaque Characterization: What can CT Contribute?
Konstantin Nikolaou, MD

2:10-2:30 Does MDCT make Interventions Easier?
Bart L. Dolmatch, MD

2:30-2:50 *Coffee Break and Exhibits*

2:50-3:05 Why Scan an Arm?
Jeffrey C. Hellinger, MD

3:05-3:25 Peripheral CTA
Dominik Fleischmann, MD

3:25-3:40 CTA of Extremity Trauma
Eric E. Williamson, MD

3:40-4:10 **Interactive Session 4: CT Angiography**
Geoffrey D. Rubin, MD

4:10-4:30 Discussion

All lectures will be held in the Ballroom at the Ritz-Carlton San Francisco.

Pre-registration and check-in is available from 3:00-5:00 pm on Tuesday, June 22, 2004.

Registration and check-in continue on Wednesday, June 23, 2003 at 7:00 am.

The Department of Radiology gratefully acknowledges support from the following companies:

**Amersham Health
Berlex
Bracco Diagnostics, Inc.
EZEM, Inc.
GE Medical Systems**

**Mallinckrodt, Inc.
Philips Medical Systems
R2 Technology, Inc.
Siemens Medical Solutions
Tera Recon, Inc.**

**Toshiba America Medical Systems, Inc.
Vital Images, Inc.**

Course Registration Form

Stanford University School of Medicine 6th Annual International Symposium on Multidetector-Row CT

June 23-26, 2003

The Ritz-Carlton

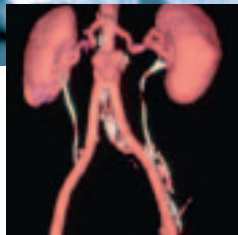
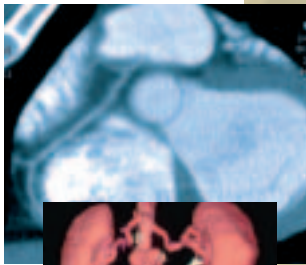
San Francisco, California

Register and pay online at
<http://radiologycme.stanford.edu>.

You can also call us toll free at
(888) 556-2230, or email us at
radiologycme@med.stanford.edu.

You may also complete and
mail/fax this registration form to:

Stanford Radiology Postgraduate
Education Program
480 California Avenue, Suite 301
Palo Alto, CA 94306
Fax: (650) 473-5062



Practicing Physician

By May 24th

\$895/per person

After May 24th

\$950/per person

Stanford Alumni/Military/Retired/Industry Professional

By May 24th

\$795/per person

After May 24th

\$850/per person

Technologist/Nurse/Resident/Fellow

By May 24th

\$595/per person

After May 24th

\$650/per person

Please make your check payable to **Stanford University School of Medicine**. All foreign payments must be made by a draft on a United States bank. To register by phone with credit card, please call or fax your request.

Name

Address

City, State & Zip

Phone (Home)

(Office)

Email

If you have any special ADA needs please specify:

Payment:

American Express Visa Master Card Check

Account#

Expiration Date

Signature

Refunds: Full refunds, less a \$75 administrative service charge, will be made to those providing written notification of withdrawal by May 24, 2004. After that date, no refunds will be given.

On Site: All lectures will be held in in the Ballroom at the Ritz-Carlton San Francisco. Pre-Registration and check-in is available from 3:00 - 5:00 pm on Tuesday, June 22, 2004. Registration and check-in continue on Wednesday, June 23, 2004 at 7:00 am.

Upcoming Stanford Radiology Postgraduate Courses

2004

May 13-15, 2004

5th Annual Advances in Breast Imaging and Intervention

Venetian Hotel, Las Vegas, NV

June 23-26, 2004

6th Annual International Symposium on Multidetector-Row CT

Ritz-Carlton Hotel
San Francisco, CA

July 28-31, 2004

Radiology Essentials

Snake River Lodge and Spa
Jackson Hole, WY

October 14-16, 2004

3rd Annual Breast MRI in Your Facility

Bellagio Hotel, Las Vegas, NV

October 17-18, 2004

3rd Annual Global Symposium on Clinical High Field MRI

Bellagio Hotel, Las Vegas, NV

October 24-28, 2004

14th Annual Current Concepts of Magnetic Resonance Imaging

Monterey Plaza Hotel
Monterey, CA

2005

January 10-15, 2005

Diagnostic Imaging Update in Vail

Ritz-Carlton Bachelor Gulch
Beaver Creek (Vail), CO

February 17-19, 2005

Stanford Summit Debate at Squaw Creek: Techniques in Interventional Radiology

Resort at Squaw Creek
Lake Tahoe, CA

March 3-5, 2005

5th Annual MR Advances in Neuroradiology and Sports Medicine Imaging

Bellagio Hotel, Las Vegas, NV

March 28-April 1, 2005

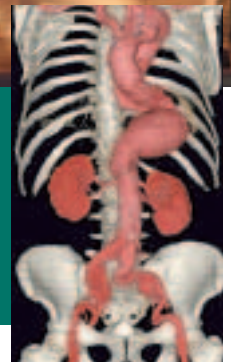
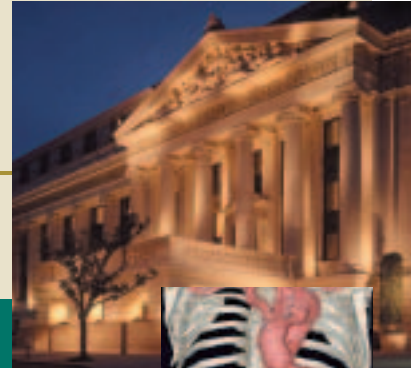
Diagnostic Imaging Update in Kauai

Hyatt Regency Kauai, HI

Register now at <http://radiologycme.stanford.edu>
or by calling (888) 556-2230.

6th Annual International Symposium on Multidetector-Row CT

Ritz-Carlton, San Francisco, California
June 23-26, 2004



STANFORD
SCHOOL OF MEDICINE

Stanford University Medical Center

Department of Radiology

480 California Avenue, Suite 301

Palo Alto, CA 94306

<http://radiologycme.stanford.edu>