

12TH ANNUAL INTERNATIONAL SYMPOSIUM ON

2010

Multidetector-Row CT

Course Directors:

Geoffrey D. Rubin, MD

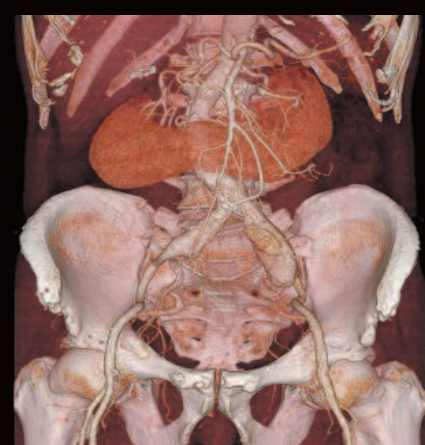
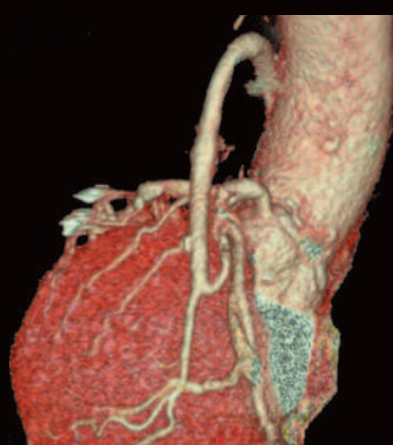
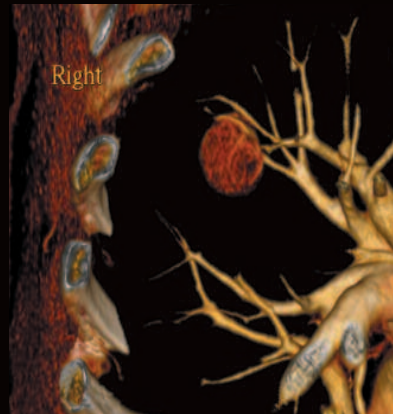
Gary M. Glazer, MD

Maximilian F. Reiser, MD

May 18-21, 2010

Hyatt Regency

San Francisco

**PROGRAM HIGHLIGHTS**

- 1. Hot Topics Presented in Highly Focused 10 Minute Lectures**
- 2. 160 Lectures from 70 World-Renowned Faculty**
- 3. 8th Annual Original Workstation Face-Off * Wednesday, May 19th at 3:40 pm**

Observe physician-operators navigate the same diverse clinical datasets to identify key clinical findings. The real-time demonstrations of workstation performance will be presented side-by-side on one stage, facilitating comparison of the capabilities, image qualities, and workflow strategies available on each workstation.

**not certified for CME credit*

This activity is supported by educational grants from: Bracco Diagnostics, Carestream Health, GE Healthcare, Philips Medical Systems, Siemens Medical Solutions, TeraRecon, Toshiba Medical Systems, Visage, Vital Images, ZioSoft

Jointly Sponsored by the
POSTGRADUATE INSTITUTE FOR MEDICINE
and ISCT

COURSE DIRECTORS:

Geoffrey D. Rubin, MD

Professor of Radiology
Associate Dean for Clinical Affairs
Chief, Section of Cardiovascular Imaging
Medical Director, 3D Laboratory
Stanford University School of Medicine

Gary M. Glazer, MD

Emma Pfeiffer Merner Professor in the
Medical Sciences
Chairman, Department of Radiology
Stanford University School of Medicine

Maximilian F. Reiser, MD

Professor and Chairman of Radiology
Dean, Ludwig-Maximilians University,
Munich

FACULTY:

Dianna M. E. Bardo, MD

Associate Professor of Radiology &
Cardiovascular Medicine
Director of Cardiac Radiology
Pediatric Neuroradiologist
Oregon Health & Science University

Prof. Dr. Hans-Christoph Becker

Professor of Radiology
Section Chief Body CT and PET/CT
Chief, Section of Cardiovascular Imaging
University of Munich – Grosshadern

Frandics Chan, MD, PhD

Assistant Professor of Radiology
Cardiovascular Imaging Section
Stanford University School of Medicine

Fergus Coakley, MD

Professor of Radiology and Urology
Chief of Abdominal Imaging and Vice-Chair
for Clinical Services
UCSF

Robert L. DeLaPaz, MD

Professor of Radiology
Director of Neuroradiology
Columbia University Medical Center

James P. Earls, MD

Co-Director Cardiac CT Program
Inova Heart and Vascular Institute
Falls Church, VA
Fairfax Radiological Consultants PC

Andrew Einstein, MD

Columbia University

Michael Federle, MD

Professor of Radiology
Associate Chair, Education
Stanford University School of Medicine

Elliot K. Fishman, MD

Professor of Radiology and Oncology
Director, Diagnostic Radiology and Body CT
Johns Hopkins University

Dominik Fleischmann, MD

Associate Professor of Radiology
Director of Computed Tomography
Stanford University School of Medicine

Dennis Foley, MD

Professor of Radiology
Chief, Section of Digital Imaging
Medical College of Wisconsin

Donald P. Frush, MD

Professor of Radiology and Pediatrics
Chief, Pediatric Radiology
Duke University Medical Center

Mario Garcia, MD

Mount Sinai

Richard T. George, MD

Assistant Professor of Medicine
Division of Cardiology
Johns Hopkins University

Robert G. Gould, ScD

Professor of Radiology
UCSF Department of Radiology and
Biomedical Imaging

Anno Graser, MD

Assistant Professor of Radiology
University of Munich – Grosshadern

S. Bruce Greenberg, MD

Professor of Radiology
University of Arkansas for Medical Sciences
Arkansas Children's Hospital

Sandra S. Halliburton, PhD

Cardiac Imaging Scientist,
Cardiovascular Imaging Lab,
Imaging Institute,
Cleveland Clinic, Cleveland, Ohio

Amy K. Hara, MD

Associate Professor, Abdominal Imaging
Mayo Clinic Arizona

Joerg Hausleiter, MD

Associate Professor of Internal Medicine,
Deutsches Herzzentrum München,
Klinik an der Technischen Universität
München, Germany

Robert J. Herfkens, MD

Professor of Radiology
Associate Chair for Clinical Technology
Director of MRI
Stanford University School of Medicine

Karen M. Horton, MD

Professor of Radiology
Johns Hopkins Medical Institutions

R. Brooke Jeffrey, MD

Professor of Radiology
Chief, Abdominal Imaging
Associate Chair for Academic Affairs
Stanford University School of Medicine

Willi A. Kalender, PhD

Professor
Director of the Institute of Medical Physics
University of Erlangen

Paul Kinahan, PhD

Professor of Radiology
Adjunct, Bioengineering and Electrical
Engineering
Director, PET/CT Physics
University of Washington

Ting-Yim Lee, PhD

Director PET/CT Imaging Research
Lawson Health Research Institute
Scientist, Roberts Research Institute
Professor, Medical Imaging
University of Western Ontario
London, Ontario, Canada

Jonathon Leipsic, MD FRCPC

Co-Director Advanced Cardiac Imaging
Assistant Professor Radiology and
Associate Member
Division of Cardiology
University of British Columbia
Department Head Medical Imaging
Providence Health Care

Ann N. Leung, MD

Professor of Radiology
Chief, Thoracic Imaging
Associate Clinical Chairman
Department of Radiology
Stanford University School of Medicine

Michael H. Lev, MD, FAHA

Director, Emergency Neuroradiology and
Neurovascular Lab
Massachusetts General Hospital
Associate Professor of Radiology
Harvard Medical School

João A. C. Lima, MD

Professor of Medicine, Radiology and
Epidemiology
Johns Hopkins University

Margaret Lin, MD

Clinical Instructor
Thoracic and Cardiovascular Imaging
Stanford University Medical Center

E. Paul Lindell, MD

Assistant Professor of Radiology
Mayo Clinic, Rochester, MN

John D. MacKenzie, MD

Assistant Professor of Pediatric Radiology
Chief of Pediatric Musculoskeletal Imaging
Lucile Packard Children's Hospital
Stanford University School of Medicine

Payam Massaband, MD

Cardiovascular Imaging Fellow
Stanford University Department of Radiology

Cynthia H. McCollough, PhD

Director, CT Clinical Innovation Center
Department of Radiology
Professor of Radiological Physics
Mayo Clinic College of Medicine

Joseph C. McGinley, MD, PhD

Cardiovascular Imaging Fellow
Stanford University Department of Radiology

Jeffrey B. Mendel, MD

Assistant Professor of Radiology
Tufts University School of Medicine

Julie M. Miller, MD, FACC

Interventional Cardiology Director
Angiographic Core Research Laboratory
Assistant Professor of Medicine
Johns Hopkins Hospital

James K. Min, MD

Assistant Professor of Medicine and Radiology
Weill Cornell Medical College and the
New York Presbyterian Hospital

Srinivasan Mukundan, Jr, MD, PhD

Associate Professor of Radiology
Harvard Medical School
Adjunct Associate Professor of Biomedical
Engineering Duke University
Section Head of Neuroradiology Brigham
and Women's Hospital, Boston MA

Sandy Napel, PhD

Associate Professor
Co-section Chief Information Sciences in
Imaging at Stanford (ISIS)
Co-director 3D Laboratory
Stanford University School of Medicine

Rendon C. Nelson, MD

Professor and Vice Chair of Radiology
Duke University School of Medicine

Beverley Newman, BSc, MBBCh, FRCR

Associate Professor of Radiology
Associate Chief of Pediatric Radiology
Lucile Packard Children's Hospital
Stanford University School of Medicine

Konstantin Nikolau, MD

Associate Professor of Radiology
Associate Chair for Clinical Operations
Section Chief, Computed Tomography
Department of Clinical Radiology
Grosshadern Campus
Ludwig-Maximilians-University of Munich

Prasad M. Panse, MD

Assistant Professor of Radiology
Mayo Clinic Arizona

Norbert J. Pelc, ScD

Professor, Departments of Radiology and
Bioengineering and by courtesy, of
Electrical Engineering
Associate Chair for Research
Department of Radiology
Stanford University School of Medicine

Perry J. Pickhardt, MD

Professor of Radiology
Chief, Gastrointestinal Imaging
University of Wisconsin School of Medicine
& Public Health

Laura Pierce, MPA, RT (CT)

3D Laboratory Manager
Department of Radiology
Stanford University School of Medicine

Myron A. Pozniak MD FRCR

Professor of Radiology
Chief of Abdominal Imaging Division
Department of Radiology
University of Wisconsin School of Medicine
and Public Health

Mathias Prokop, MD

Professor and Chairman of Radiology
University Medical Center Utrecht
The Netherlands

Raghav Raman, MD

Cardiovascular Imaging Fellow
Stanford University Department of Radiology

David Rex, MD

Resident
Stanford University Department of Radiology

Patrik Rogalla, MD

Professor of Radiology
Department of Medical Imaging
University of Toronto

Justus E. Roos, MD

Assistant Professor of Radiology
Stanford University School of Medicine

Jean Louis Sablayrolles, MD

Chief, Cardiovascular Imaging
Centre Cardiologique du Nord

Dushyant Sahani, MD

Director of CT
Associate Professor of Radiology
Harvard Medical School
Division of Abdominal Imaging and
Intervention
Massachusetts General Hospital

U. Joseph Schöepf, MD

Professor of Radiology and Medicine
Director of Cardiovascular Imaging
Medical University of South Carolina

William P. Shuman, MD, FRCR

Professor and Vice Chairman,
Department of Radiology
University of Washington

F. Graham Sommer, MD

Professor of Radiology
Stanford University School of Medicine

Jacob Sosna, MD

Section Chief, CT
Director of Research and Imaging
Laboratories
Hadassah Hebrew University Medical Center
Jerusalem, Israel

Jorge A. Soto, MD

Professor of Radiology
Vice Chairman, Department of Radiology
Boston University Medical Center

Shawn D. Teague, MD

Associate Professor of Clinical Radiology
Chief of Cardiothoracic Imaging
Department of Radiology
Indiana University School of Medicine

Johnny Vlahos, BSc, MBBS, MRCP, FRCR

Hon. Senior Lecturer
St George's University of London
Assistant Professor of Radiology
NYU School of Medicine

Steven D. Weisbord, MD, MSc, FASN

Staff Physician, Renal Section and Core
Investigator
Center for Health Equity Research and
Promotion

VA Pittsburgh Healthcare System

Assistant Professor of Medicine

Renal-Electrolyte Division

University of Pittsburgh School of Medicine

Charles S. White, MD

Professor of Radiology and Medicine
Department of Radiology
University of Maryland

Benjamin M. Yeh, MD

Associate Professor
UCSF Department of Radiology and
Biomedical Imaging

Greg Zaharchuk, MD, PhD

Assistant Professor of Radiology
Stanford University School of Medicine

TARGET AUDIENCE

This activity has been designed to meet the educational needs of Radiologists, Cardiologists, Medical Imaging Scientists, Radiologic Technologists, Nurses and non-radiologist physicians who utilize CT technology and its applications.

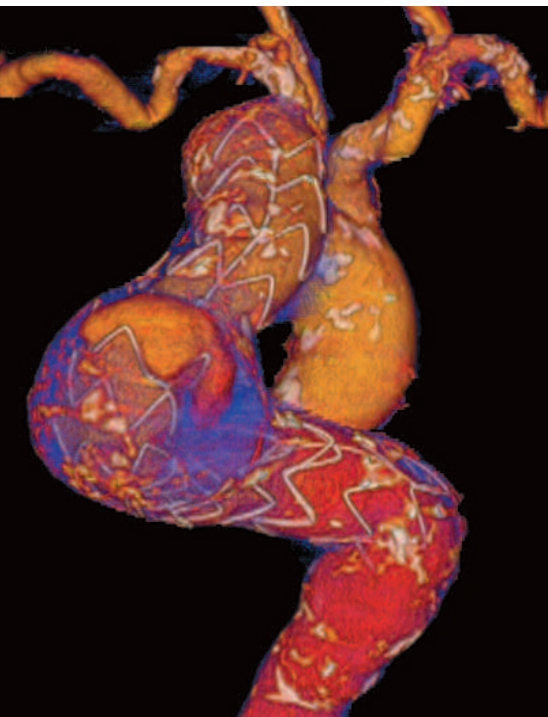
STATEMENT OF NEED/PROGRAM OVERVIEW

Learners need to understand the impact of new MDCT developments on clinical practice and how to implement acquisition protocols, dose reduction strategies and visualization techniques to take full advantage of these advances. Developments in MDCT technology have resulted in a broad spectrum of new and improved clinical applications. Learners need to recognize pitfalls and employ applications and techniques in abdominal, musculoskeletal, thoracic, neuro, cardiac and vascular CT imaging for improved image quality and diagnosis.

EDUCATIONAL OBJECTIVES

After completing this activity, the participant should be able to:

- List appropriate techniques to reduce radiation exposure while maintaining diagnostic image quality.
- Describe advanced image rendering techniques and post processing workstations to fully analyze scan data.
- Explain the current methods for performing cardiac CT in the clinical setting.
- Identify the methods and applications for improving CT imaging utilizing the latest generation of CT scanners.
- Enumerate current techniques and protocols to accurately diagnose disorders of the chest, brain, abdomen, vascular, and musculoskeletal systems in adults and children.
- Specify imaging and post-processing techniques to accurately measure brain perfusion for more detailed diagnosis and follow-up to treatment.



ACCREDITATION STATEMENT

This activity has been planned and implemented in accordance with the Essential Areas and policies of the Accreditation Council for Continuing Medical Education (ACCME) through the joint sponsorship of Postgraduate Institute for Medicine (PIM) and The International Society for Computed Tomography. PIM is accredited by the ACCME to provide continuing medical education for physicians.

CREDIT DESIGNATION

Postgraduate Institute for Medicine designates this educational activity for a maximum of **33 AMA PRA Category 1 Credits™**. Physicians should only claim credit commensurate with the extent of their participation in this activity.

Upon successfully completing the post-test and evaluation online, your certificate will be made available immediately.

ACCOMMODATIONS

The meeting will be held at the Hyatt Regency San Francisco. The Hyatt Regency San Francisco is located on the Embarcadero waterfront and centrally located in the financial district at 5 Embarcadero Center, at the corner of Market and Drumm Streets.

A discounted rate of **\$219.00** per room per night has been reserved for our conference participants and is subject to tax. To receive this special rate please make your reservation no later than **April 25, 2010**. After April 25th, rooms at our discounted rate cannot be guaranteed. **Rooms are reserved on a first-come, first-served basis, and may sell out before the cut-off date.**

Make your reservations now by contacting the Hyatt Regency San Francisco at 1-800-720-0049 or (415) 788-1234 or online at <http://sanfranciscohyattregency.com> (group code:G-ISCT).

For more information on the Hyatt Regency San Francisco, please visit their website at <http://sanfranciscohyattregency.com>

TRAVEL

Special meeting discounts on airfare and car rentals have been arranged for our attendees and their guests. The airlines offer discounts off published fares and special not-available-to-the general public area pricing rates.

Call United Airlines at 1-800-521-4041 and reference Meeting ID Code **502BH**, or book online at www.united.com, and enter the promotion code in the section for "more search options".

Call American Airlines at 1-800-433-1790 and reference Authorization Number **A1510SS** to information on zone fares. The AA code cannot be used online.

Call Avis Car Rental at 1-888-754-8878, and refer to AWD #D004951, or book online at <http://www.avis.com>, and enter the AWD number on the reservation page.

Call Hertz Car Rental at 1-800-654-2240 and refer to CV #01YN0016, or book online at <http://www.hertz.com>, and enter the CV number on the reservation form.

TUESDAY, MAY 18, 2010

6:30-7:00	Registration, Check-in, and Continental Breakfast
7:00-7:10	Welcome Gary M. Glazer, MD
7:10-7:20	Program Introduction Geoffrey D. Rubin, MD
SESSION I: <i>Moderator</i> 7:20-7:30	TECHNOLOGY: PRESENT AND FUTURE <i>Geoffrey D. Rubin, MD</i> MDCT Technology 2010: The Big Picture Geoffrey D. Rubin, MD
7:30-7:40	Advantages and Disadvantages of Scanning at Low kV Settings Willi A. Kalender, PhD
7:40-7:50	Technical Considerations for Low Tube Voltage Imaging Sandy S. Halliburton, PhD
7:50-8:00	Impact of Model-Based Iterative Reconstruction on Image Quality and Radiation Dose Paul Kinahan, PhD
8:00-8:10	The Trade Off Between Adaptive Statistical Iterative Reconstruction (ASIR) and Model Based Iterative Reconstruction (MBIR) Rendon C. Nelson, MD
8:10-8:20	Dual-Source Spiral CT at Pitch Values up to 3.4: Assessment of Image Quality for Non-Cardiac Applications Cynthia H. McCollough, PhD
8:20-8:30	Initial Results with a Multi-source Inverse Geometry CT System Norbert J. Pelc, ScD
8:30-8:45	Discussion/Q & A
SESSION II: <i>Moderator</i> 8:45-8:55	DUAL ENERGY/SPECTRAL IMAGING <i>Geoffrey D. Rubin, MD</i>
8:55-9:05	Simulation of Single and Dual Energy Protocols Based on Clinical Data Norbert J. Pelc, ScD
9:05-9:15	Dual Energy Spectral Imaging: Definition and Clinical Utility of Monochromatic and Material Density CT Images Amy K. Hara, MD
9:15-9:25	The Combination of 100 kVp and 140 kVp with Sn Filtering Improves Image Quality in Dual Energy CT Hans-Christoph Becker, MD
9:25-9:45	From Dual Energy CT to Photon Counting Technology Jacob Sosna, MD
9:45-9:55	Coffee Break & View Exhibits
9:55-10:05	CdTe Detectors for CT: A Realistic Option? Willi A. Kalender, PhD
10:05-10:15	Spectral Imaging: Initial Clinical Results in Blood Vessels Jean-Louis Sablayrolles, MD
10:15-10:25	Calcium Quantification from Contrast-Enhanced CT: Is it Possible Using Dual Energy? Sandy S. Halliburton, PhD
10:25-10:35	Spectral Imaging: Initial Clinical Results in Cancer Jean-Louis Sablayrolles, MD
10:35-10:50	Implementing Dual Energy CT and Adaptive Statistical Iterative Reconstruction in Routine Clinical Practice Amy K. Hara, MD
SESSION III: <i>Moderator</i> 10:50-11:00	Discussion/Q & A RADIATION DOSE <i>Geoffrey D. Rubin, MD</i>
11:00-11:10	Dose in DECT: Does it Go Up or Down? Cynthia H. McCollough, PhD
11:10-11:20	The Relationship Between Dose-Length Product and Effective Dose: Not So simple? Andrew Einstein, MD
11:20-11:30	Relevance of CT Dose Indices for Estimating Patient Dose and Potential Risks Robert G. Gould, ScD
	Beyond mA & kV – Radiation Dose Reduction in MDCT: Definitions, Strategies, Physics Dianna Bardo, MD

11:30-11:40 **Automatic kV Selection for CT Dose Reduction: An Idea Whose Time Has Come**
Cynthia H. McCollough, PhD

11:40-11:50 **Is sub-mSv CT Scanning A Reality?**
Willi A. Kalender, PhD

11:50-12:00 pm **Dosimetry of 320-Slice Volume CT Coronary Angiography**
Andrew Einstein, MD

12:00-12:10 **Clinical Experience with Iterative Reconstruction & Dose Reduction in Dual Source CT**
Hans-Christoph Becker, MD

12:10-12:25 **Discussion/Q & A**

12:25-1:40 **Lunch Break**

1:40-1:50 **CT, Radiation, and Pregnancy: Just the Facts**
Donald P. Frush, MD

1:50-2:00 **Use of Bismuth Breast Shields in CT**
Rendon C. Nelson, MD

2:00-2:10 **CT and the Cumulative Radiation Dose Record: The Next Imperative**
Donald P. Frush, MD

2:10-2:20 **TBA**
Mathias Prokop, MD

2:20-2:30 **What Evidence is There That Radiation is Associated with Increased Cancer Risk at Doses Used for CT?**
Andrew Einstein, MD

2:30-2:40 **CT Fluoroscopy: Don't Be Scared**
Patrik Rogalla, MD

2:40-2:55 **Discussion/Q & A**

SESSION IV: CONTRAST MEDIUM DELIVERY AND IMAGE ENHANCEMENT
Moderator
Dominik Fleischmann, MD

2:55-3:05 **Innovative Intravenous Catheters for Optimizing the Administration of Contrast Media**
Rendon C. Nelson, MD

3:05-3:15 **Power Injectors are Becoming Smarter**
Dominik Fleischmann, MD

3:15-3:25 **Optimal Techniques for Use of a Saline Chaser**
Rendon C. Nelson, MD

3:25-3:35 **Patient & Scan Specific Contrast Medium Dosing: How and Why?**
Dominik Fleischmann, MD

3:35-3:45 **Contrast Volumes for Short Scan Time Coronary CT: How Low Can We Go?**
Sandy S. Halliburton, PhD

3:45-4:05 **Coffee Break & View Exhibits**

4:05-4:15 **Which Patients are at High Risk for Clinical Significant Contrast-Induced Nephropathy Following Computed Tomography?**
Steven D. Weisbord, MD, MSc, FASN

4:15-4:25 **Background Fluctuation of Kidney Function Versus Contrast-Induced Nephrotoxicity**
Myron A. Pozniak MD FACR

4:25-4:35 **When to Assess Renal Function Prior to CT to Determine Risk for Contrast-Induced Nephropathy**
Steven D. Weisbord, MD, MSc, FASN

4:35-4:45 **CT Contrast Agents in the nasoethmoidal Era**
Jacob Sosna, MD

4:45-4:55 **Important Principles in CT Perfusion**
Dominik Fleischmann, MD

4:55-5:05 **Small Animal Perfusion Imaging with a Clinical CT Scanner**
Ting-Yim Lee, PhD

5:05-5:20 **Discussion/Q & A**

WEDNESDAY, MAY 19, 2010

6:30-7:00 am **Registration, Check-in, and Continental Breakfast**

SESSION V: ABDOMEN I: HERITABILITY AND PANCREAS
Moderator
R. Brooke Jeffrey Jr., MD

7:00-7:10 **Abdominal Pathology Using Low Dose CT With Adaptive Statistical Iterative Reconstruction Compared with Routine Dose CT**
Amy K. Hara, MD

7:10-7:20 **Rational Scan Delays for Liver CT**
Benjamin M. Yeh, MD

7:20-7:30 **Can We Stage HNC Accurately with CT/MR?**
Michael Federle, MD

7:30-7:40 **Dual Energy CT of Focal Lesions in the Cirrhotic Liver**
William P. Shuman, M.D. FACR

7:40-7:50 **CT Cholangiography: Has its Time Come or Gone?**
Benjamin M. Yeh, MD

7:50-8:00 **Hepatic and Biliary Inflammatory Pseudomonas**
Michael Federle, MD

8:00-8:10 **Role of Spectral CT in the Abdomen: New Opportunities or Challenges?**
Dushyant Sahani, MD

8:10-8:20 **Dual Energy Spectral Imaging: Appearance of Common Abdominal Lesions Using Dual Energy Spectral Imaging**
Amy K. Hara, MD

8:20-8:30 **The Puberty of Abdominal CT Perfusion**
Patrik Rogalla, MD

8:30-8:40 **Free Breathing CT Liver Perfusion Imaging**
Ting-Yim Lee, PhD

8:40-8:50 **Dynamic Contrast-enhanced CT Imaging for Monitoring the Effect of Anti-angiogenic Drugs in Experimental Tumor Models**
Konstantin Nikolaou, MD

8:50-9:00 **Monitoring Tumor Response: 2D/3D/HU or Function**
Dushyant Sahani, MD

9:00-9:10 **Potential Errors in the Diagnosis of a Pancreatic Mass: Pearls and Pitfalls**
Elliot K. Fishman, MD

9:10-9:20 **Small Cystic Lesions of the Pancreas: When to Operate, When to Observe**
R. Brooke Jeffrey, MD

9:20-9:30 **Surgical Procedures for Resection of Pancreatic Masses 2010: Beyond the Whipple's Procedure**
Elliot K. Fishman, MD

9:30-9:45 **Discussion/Q & A**

9:45-10:05 **Coffee Break & View Exhibits**

SESSION VI: ABDOMEN II: GENITOURINARY & GASTROINTESTINAL
Moderator
Michael Federle, MD

10:05-10:15 **Can Dual-source, Dual-energy CT Discriminate Renal Stone Composition?**
Cynthia H. McCollough, PhD

10:15-10:25 **Simplifying MDCT Urography Acquisition**
F. Graham Sommer, MD

10:25-10:35 **Radiation Exposure and Strategies for Lowering Dose in MDCT Scans for Urolithiasis: Observations from a Multi-institutional Multivendor Study**
Dushyant Sahani, MD

10:35-10:45 **Role of CT Arteriography and Venography in Imaging of Pancreatic Transplants**
W. Dennis Foley, MD

10:45-10:55 **Vascular & Functional Assessment of Renal Transplants by Time Resolved CTA**
Hans-Christoph Becker, MD

10:55-11:05 **MDCT of Renal Function: Approaches and Applications**
F. Graham Sommer, MD

11:05-11:15 **Prostate MRI: Who Needs it?**
Fergus Coakley, MD

11:15-11:25 **Vascular Gastric Masses**
Karen M. Horton, MD

11:25-11:35 **Shock Bowel vs Focal Injury on MDCT**
R. Brooke Jeffrey, MD

11:35-11:45 **MDCT-endoscopic Correlation of Gastrointestinal Pathology**
Perry J. Pickhardt, MD

11:45-11:55 **MDCT Enterography of Crohn's Disease: Utility of Volumetric Display**
Jorge A. Soto, MD

11:55-12:05 pm **Dual Energy CT Colonography for Characterization of Colonic Masses**
Anno Graser, MD

12:05-12:15 **CT Colonography Interpretation: Do Time Efficiency and Diagnostic Performance Compete?**
Jorge A. Soto, MD

12:15-12:25 **Diagnostic Accuracy and Interpretation Times of CT Colonography Using Advanced 3D Visualization**
Anno Graser, MD

12:25-12:35 **Diagnostic Performance of MDCT for Acute Appendicitis**
Perry J. Pickhardt, MD

12:35-12:45 **Malpractice in Abdominal Imaging: What You Need to Know**
Fergus Coakley, MD

12:45-1:00 **Discussion/Q & A**

1:00-2:20 **Lunch Break**

SESSION VII: WORKFLOW/IMAGE PROCESSING
Moderator
Geoffrey D. Rubin, MD

2:20-2:30 **Why Not Read Everything in 3D?**
Jeffrey B. Mendel, MD

2:30-2:40 **3D Segmentation – Precision Evaluation Based on Computational Tools**
Jacob Sosna, MD

2:40-2:50 **Quality Improvement in 3D Imaging**
Laura Pierce, MPA, RT (CT)

2:50-3:00 **Tracking CT Exploration: What You See**
Geoffrey D. Rubin, MD

3:00-3:10 **Content-based Image Retrieval for Decision Support and Knowledge Discovery**
Sandy Napel, PhD

3:10-3:25 **Discussion/Q & A**

3:25-3:40 **Coffee Break & View Exhibits**

3:40-5:35 **8th Annual Workstation Face-Off***
Geoffrey D. Rubin, MD

View and Compare How Each Major Workstation Can be Used for Visualization and Analysis of Volumetric MDCT Data
**not certified for CME credit*

THURSDAY, MAY 20, 2010

6:30-7:00 am **Registration, Check-in, and Continental Breakfast**

SESSION VIII: VASCULAR
Moderator
Dominik Fleischmann, MD

7:00-7:10 **Low-dose CT of the Thoracic Aorta Using a Wide Detector Array Scanner**
Sandy S. Halliburton, PhD

7:10-7:20 **Role of CT in Diagnosis and Management of Adult Aortic Coarctation**
W. Dennis Foley, MD

7:20-7:30 **Aortic Dissection and Atherosclerosis**
Robert Herfkens, MD

7:30-7:40 **Mechanisms of Side Branch Ischemia in Aortic Dissection**
Dominik Fleischmann, MD

7:40-7:50 **CT Arteriography/Venography of the Thoracic Outlet: Technique and Applications**
W. Dennis Foley, MD

7:50-8:00 **Impact of High Resolution Mode, ASIR and Dual-energy on Vascular CT**
Raghav Raman, MD

8:00-8:10 **CTA Diagnosis of Median Arcuate Ligament Syndrome**
Karen M. Horton, MD

8:10-8:20 **Discovering Failing Endografts**
Geoffrey D. Rubin, MD

8:20-8:30 **Unenhanced CT for Assessment of Endografts**
Myron A. Pozniak MD FACR

8:30-8:40 **Blood Flow Physiology and CT Angiography**
Benjamin M. Yeh, MD

8:40-8:50 **CT Angiography of Extremity Trauma: Expanded Applications with 64 MDCT and Beyond**
Jorge A. Soto, MD

8:50-9:00 **The Value of Time-Resolved CT-Angiography for the Lower Leg**
Konstantin Nikolaou, MD

9:00-9:10 **CT Venography**
Payam Massaband, MD

9:10-9:25 **Discussion/Q & A**
 9:25-9:45 **Coffee Break & View Exhibits**

SESSION IX: **CARDIAC I: TECHNIQUE, INDICATIONS, AND INTERPRETATION**
Moderator *Geoffrey D. Rubin, MD*

9:45-9:55 **Data Acquisition Modes for Cardiac CT: Understanding the Options from All Vendors**
 Sandy S. Halliburton, PhD

9:55-10:05 **Prospectively Triggered Coronary CT Angiography with Zero Padding – Myth or Reality**
 Jonathon Leipsic MD FRCP

10:05-10:15 **Prospectively Triggered CCTA: Recommendations From 4000 Clinical Exams**
 James P. Earls, MD

10:15 -10:25 **Prospective ECG-Triggering is Growing Up: Arrhythmia and Cardiac Function**
 U. Joseph Schoepf, MD, FAHA

10:25-10:35 **Validating and Defining the Role of ASIR in Coronary CT Angiography**
 Jonathon Leipsic MD FRCP

10:35-10:45 **Adaptive Statistical Iterative Reconstruction in CCTA: Results from the ERASIR Trial**
 James P. Earls, MD

10:45-10:55 **Wide Area Detector CT: Advantages for Cardiac CT Imaging**
 Richard T. George, MD

10:55-11:05 **Single Beat Cardiac CTA: Adjusting the Radiation Dose to the Patient's Body Habitus**
 Patrik Rogalla, MD

11:05-11:15 **Ultra Low Dose Cardiac Imaging: Initial Experience**
 Jeffrey Mendel, MD

11:15-11:25 **Advantages of Dual Energy Spectral Imaging for Coronary CTA**
 Prasad Panse, MD

11:25-11:35 **Prospective Randomized Trial On Radiation Dose Estimates of CT Angiography In Patients Scanned With A Sequential Scan Protocol – The PROTECTION III Study**
 Joerg Hausleiter, MD

11:35-11:45 **Use of A Pitch Value of 3.4 in Dual Source, Cardiac CT Angiography: Dose and Image Quality Relative to Existing Scan Modes**
 Cynthia H. McCollough, PhD

11:45-11:55 **Radiation Exposure and Image Quality with Single Heart Beat Coronary CT Angiography in 2nd Generation Dual-source CT – Is There A Further Improvement with Iterative Reconstruction?**
 Joerg Hausleiter, MD

11:55-12:10 **Discussion/Q & A**
 12:10-12:25 **Lunch**

SESSION X: **CARDIAC II: NON-ISCHEMIC CARDIAC CT**
Moderator *Geoffrey D. Rubin, MD*

1:25-1:35 **Preoperative Findings of Complex Congenital Heart Disease: Real-life Anatomy Doesn't Always Look Like a Textbook Drawing**
 Dianna Bardo, MD

1:35-1:45 **Imaging Heart Valves in Children in An Open and Shut Case**
 Frandics Chan, MD, PhD

1:45-1:55 **CT Imaging of Valvular Heart Disease**
 Joseph C. McGinley, MD, PhD

1:55-2:05 **CT Angiography of Cardiac Valve Replacements and Their Complications**
 Margaret Lin, MD

2:05-2:15 **How Do Cardiologists Use Cardiac CT For Pulmonary Vein Ablation?**
 Shawn D. Teague, MD

2:15-2:25 **Detection of LAA Thrombi by CT**
 Mario Garcia, MD

2:25-2:35 **Adenosine-Induced Stress Myocardial Perfusion CT Imaging with Dual-source CT at Low Radiation Dose**
 Joerg Hausleiter, MD

2:35-2:45 **Extra-low Dose CT Cardiac Perfusion Imaging**
 Ting-Yim Lee, PhD

2:45-2:55 **Dynamic Myocardial Stress Perfusion Imaging Using Fast Dual Source CT With Alternating Table Positions: Initial Experience**
 Konstantin Nikolaou, MD

2:55-3:05 **Myocardial Perfusion: Time-Resolved Imaging versus Dual-Energy CT**
 U. Joseph Schoepf, MD, FAHA

3:05-3:15 **Myocardial Perfusion and Prognosis in the Patient With Suspected CAD**
 Joao A. C. Lima, MD

3:15-3:25 **Myocardial Viability Imaging with CT**
 Richard T. George, MD

3:25-3:35 **CCTA Versus Functional Imaging, A Randomized Controlled Trial**
 James K. Min, MD

3:35-3:50 **Discussion/Q & A**
 3:50-4:10 **Coffee Break & View Exhibits**

SESSION XI: **CARDIAC III: MYOCARDIAL ISCHEMIA AND CORONARY CTA**
Moderator *Geoffrey D. Rubin, MD*

4:10-4:20 **New Kid on the Block: Computer Aided Stenosis Detection for Coronary CTA**
 U. Joseph Schoepf, MD, FAHA

4:20-4:30 **CT Coronary Angiography in Patients with Atrial Fibrillation**
 Mario Garcia, MD

4:30-4:40 **Functional or Anatomic Assessment of Coronary Disease: What is the "Gold Standard"?**
 Julie M. Miller, MD, FACC

4:40-4:50 **Cardiovascular Event Rate Following Coronary CTA: A Meta-analysis**
 Hans-Christoph Becker, MD

4:50-5:00 **Coronary CTA : A Guide for PCI**
 Jean-Louis Sablayrolles, MD

5:00-5:10 **Assessment of Stenosis Severity: What is "Significant"?**
 Julie M. Miller, MD, FACC

5:10-5:20 **CorE 320 – Study Design and CT Method**
 Joao A. C. Lima, MD

5:20-5:30 **Cost Effectiveness of CCTA**
 James K. Min, MD

5:30-5:40 **How We Built a Combined Cardiologist/Radiologist Cardiac CT Imaging Service**
 Shawn D. Teague, MD

5:40-5:55 **Discussion/Q & A**

FRIDAY, MAY 21, 2010

6:30-7:00 am **Registration, Check-in, and Continental Breakfast**

SESSION XII: **PEDIATRIC**
Moderator *Beverley Newman, BSc, MBBCh, FACR*

7:00-7:10 **Dose Values in Pediatric CT and Options for Their Reduction**
 Willi A. Kalender, PhD

7:10-7:20 **Sedation-free Pediatric CT: Use of High-pitch Dual-source CT to Obtain Artifact-free Images of Moving Patient**
 Cynthia H. McCollough, PhD

7:20-7:30 **Minimizing Dose in CT Guided MSK Procedures: Beyond mAs & kVp**
 John D. MacKenzie, MD

7:30-7:40 **CT of Congenital Lung Abnormalities in Children**
 Donald P. Frush, MD

7:40-7:50 **Imaging Airways in Children – An Inside and Outside Look**
 Frandics Chan, MD, PhD

7:50-8:00 **The Thymus and Thymus Disorders in Children: CT and The Organ of Mystery**
 Donald P. Frush, MD

8:00-8:10 **Dynamic Pulmonary Scanning**
 S. Bruce Greenberg, MD

8:10-8:20 **Low Dose Cardiovascular CTA in Children Using Volume Scanning**
 S. Bruce Greenberg, MD

8:20-8:30 **Normalization of Cardiac Measurements to Body Surface Area in Children: How Not to Do It**
 Raghav Raman, MD

8:30-8:40 **MDCT Imaging of the Coronary Arteries in Infants: Keys to Making Reproducible and Diagnostic Images**
 Dianna Bardo, MD

8:40-8:50 **TBA**
 TBA

8:50-9:00 **Congenital Intra and Extrahepatic Portosystemic Shunts**
 Beverley Newman, BSc, MBBCh, FACR

9:00-9:10 **TBA**
 TBA

9:10-9:20 **Common Pitfalls in MSK MDCT in the Growing Skeleton**
 John D. MacKenzie, MD

9:20-9:35 **Discussion/Q & A**
 9:35-9:55 **Coffee Break and View Exhibits**

SESSION XIII: **CHEST**
Moderator *Ann N. Leung, MD*

9:55-10:05 **Concepts for Dedicated CT of the Breast**
 Willi A. Kalender, PhD

10:05-10:15 **TBA – Breast CT**
 Jeffrey B. Mendel, MD

10:15-10:25 **Iterative Reconstruction in Thoracic CT – Initial Results and Experiences**
 Jonathon Leipsic MD FRCP

10:25-10:35 **Higher Resolution HRCT with Iterative Reconstruction?**
 Johnny Vlahos, BSc, MBBS, MRCP, FRCR

10:35-10:45 **Diagnosis of PE in Pregnancy**
 Ann N. Leung, MD

10:45-10:55 **Prospectively Gated CTA of the Pulmonary Arteries**
 William P. Shuman, M.D. FACR

10:55-11:05 **Is There a Role for PE CAD?**
 Charles S. White, MD

11:05-11:15 **What is a Lung Nodule?**
 Geoffrey D. Rubin, MD

11:15-11:25 **Pragmatic Approach in Management of Small Pulmonary Nodules**
 Ann N. Leung, MD

11:25-11:35 **Missed Lung Cancer on CT**
 Charles S. White, MD

11:35-11:45 **Volumetric Assessment of Pulmonary Nodules on CT**
 Margaret Lin, MD

11:45-11:55 **Peripheral Peribronchovascular Lung Diseases**
 Johnny Vlahos, BSc, MBBS, MRCP, FRCR

11:55-12:05 pm **CT Patterns in Pulmonary Infections: Do They Change with Lower CT Dose?**
 Justus E. Roos, MD

12:05-12:15 **Approaching Lung Disease in the Immune Compromised Host**
 Johnny Vlahos, BSc, MBBS, MRCP, FRCR

12:15-12:25 **TBA – Chest**
 Jeffrey B. Mendel, MD

12:25-12:35 **Combined Pulmonary Fibrosis and Emphysema: A Diagnostic Challenge**
 Justus E. Roos, MD

12:35-12:45 **Preoperative Imaging of Pectus Excavatum**
 Margaret Lin, MD

12:45-1:00 **Discussion/Q & A**
 1:00-2:30 **Lunch**

SESSION XIV: **NEURO**
Moderator *Greg Zaharchuk, MD, PhD*

2:30-2:40 **Unorthodox Positioning & Scanning Techniques in Neuroradiology: Use MDCT to Your Patients' Advantage**
 Dianna Bardo, MD

2:40-2:50 **Optimal Image Quality at Minimum Radiation Dose: Neuroimaging with Noise Reducing Iterative Reconstruction Algorithms**
 Michael H Lev, MD, FAHA

2:50-3:00 **Volume CT Applications for the Pediatric Head**
 S. Bruce Greenberg, MD

3:00-3:10 **Dual Source and Dual Energy CT Imaging Opportunities in Neuroradiology**
 David Rex, MD

3:10-3:20	Spectral CT Neuroimaging: Pilot Results and "Killer Apps" Michael H Lev, MD, FAHA
3:20-3:30	TBA E. Paul Lindell, MD
3:30-3:40	320 Detector Dynamic CTA Srinivasan Mukundan, Jr. MD, PhD
3:40-3:50	Initial Experience with Acute Cerebral Ischemia CT Angiography Robert de la Paz, MD
3:50-4:00	Bone Subtraction CTA of the Neck Srinivasan Mukundan, Jr. MD, PhD
4:00-4:15	Discussion/Q & A
4:15-4:30	Coffee & View Exhibits
4:30-4:40	128 Detector Whole Brain CTP in the ED Srinivasan Mukundan, Jr. MD, PhD
4:40-4:50	Accurate CT Perfusion Imaging Detection of Infarct Core: A New Paradigm? Michael H Lev, MD, FAHA
4:50-5:00	Whole Brain CT Perfusion Using CTA and CT Robert de la Paz, MD
5:00-5:10	High-dose CT Brain Perfusion and the FDA: What Happened, How it Happened, and How to Prevent it From Happening to You Greg Zaharchuk, MD, PhD
5:10-5:20	Extra-low Dose CT Brain Perfusion Imaging Ting-Yim Lee, PhD
5:20-5:30	TBA Mathias Prokop, MD
5:30-5:40	TBA E. Paul Lindell, MD
5:40-5:50	TBA Mathias Prokop, MD
5:50-6:05	Discussion/Q & A

Please note that program may slightly change. Please refer back to website for final schedule.

Disclosure of Conflicts of Interest

Postgraduate Institute for Medicine (PIM) requires instructors, planners, managers and other individuals who are in a position to control the content of this activity to disclose any real or apparent conflict of interest they may have as related to the content of this activity. All identified conflicts of interest are thoroughly vetted by PIM for fair balance, scientific objectivity of studies mentioned in the materials or used as the basis for content, and appropriateness of patient care recommendations.

